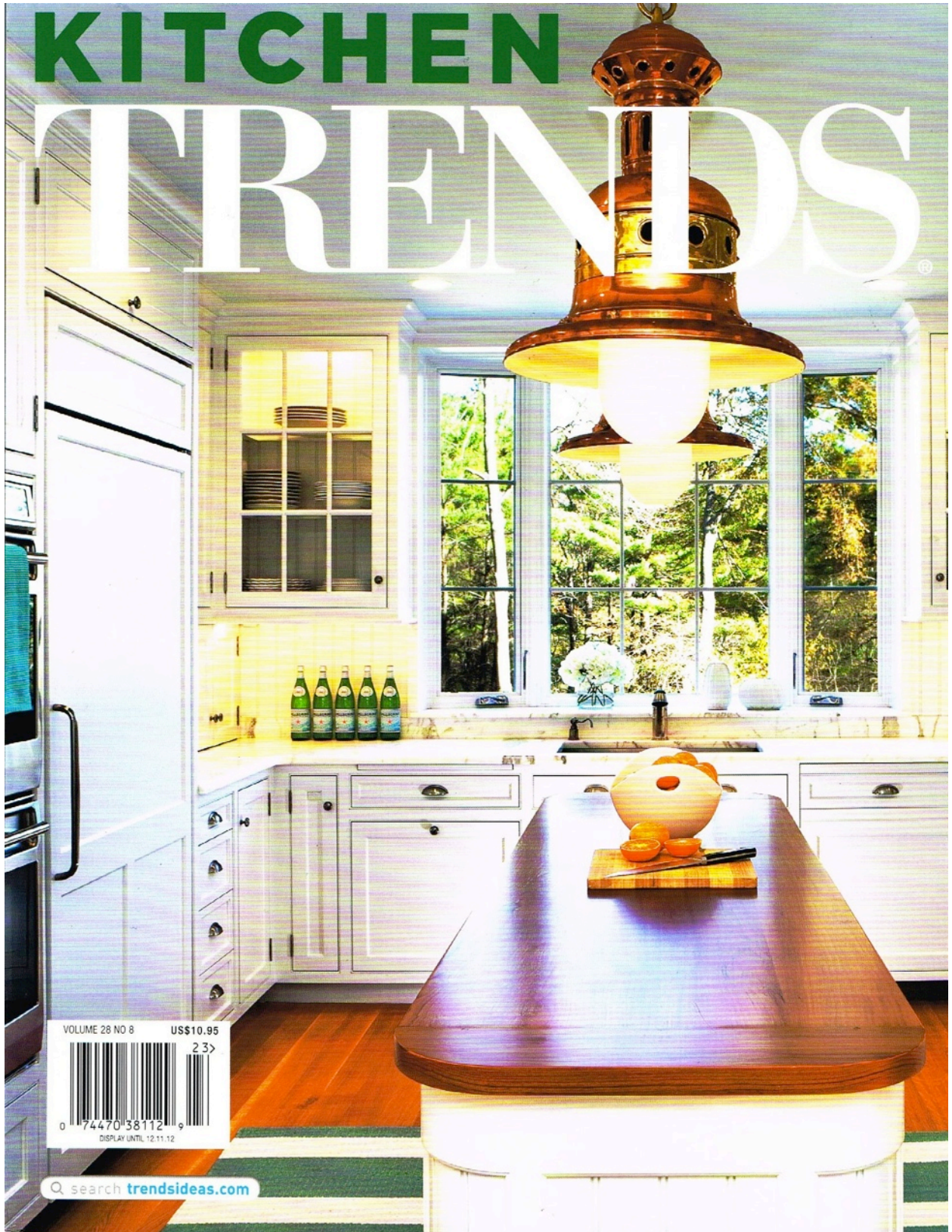


# KITCHEN TRENDS



VOLUME 28 NO 8    US\$10.95

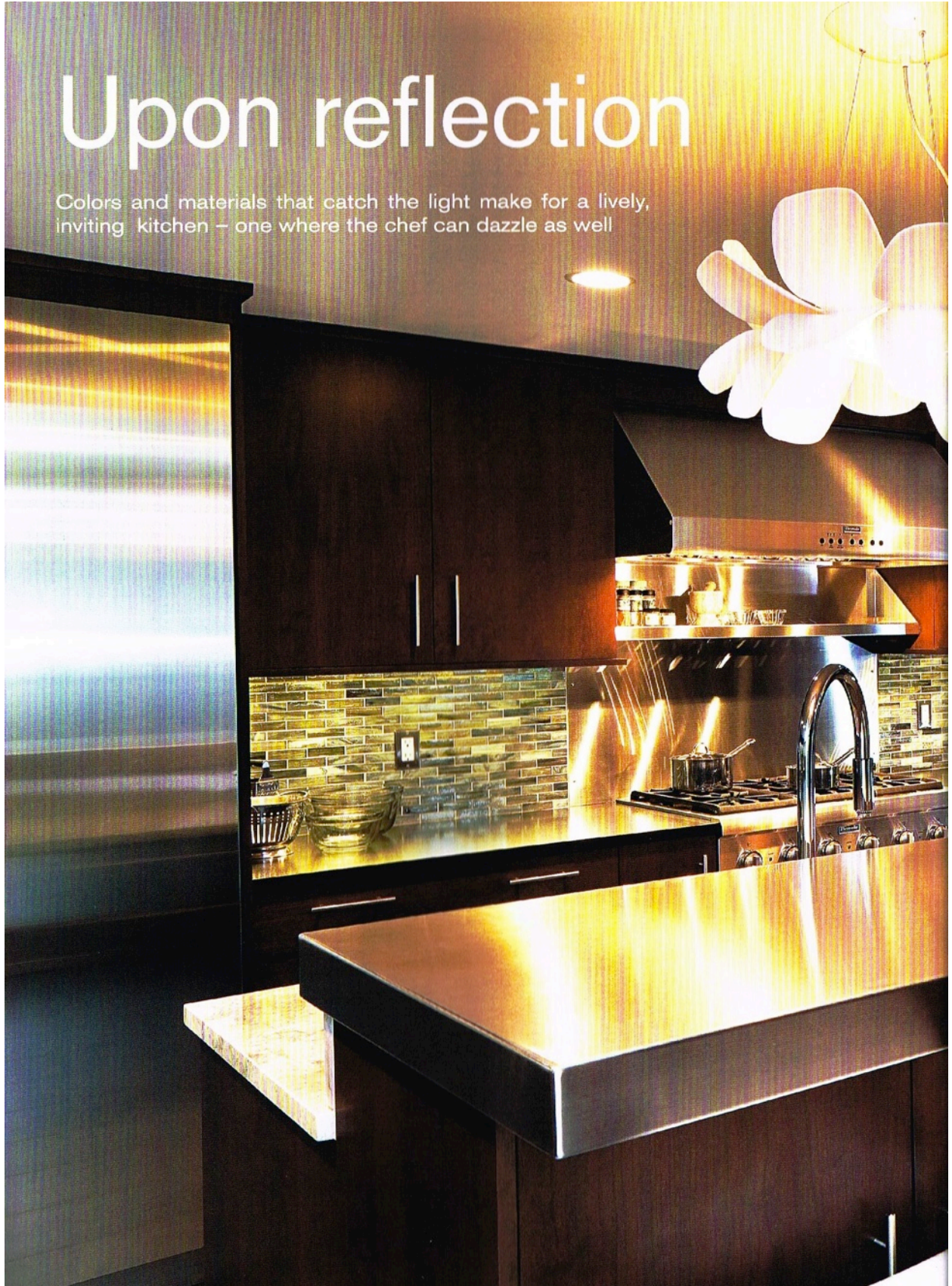


search [trendsideas.com](http://trendsideas.com)

Fall 2012

# Upon reflection

Colors and materials that catch the light make for a lively, inviting kitchen – one where the chef can dazzle as well



sparkle & shine





# In the limelight

With its central, L-shaped island and seating for seven, this remodeled family kitchen puts the focus firmly on the chef – but it's also a place for sharing stories and mealtimes



**Older houses often grow** through a series of unrelated additions and alterations – and most commonly this can be seen in the kitchen.

This house had such a past. The original kitchen had been added on to several times over its life, and each addition seemed to result in a different ceiling height, says kitchen designer Nadia Subaran of Aidan Design.

“Owners David and Tracy Child wanted a much more modern, very sleek family kitchen, which meant we needed to level the ceiling,” Subaran says. “It is now 8ft 9in high right through the kitchen, which was the maximum height we could make it. We have added an extra skylight and French doors so there is a lot more natural light coming into the room.”

But that isn’t the only source of natural light – at the owners’ request the designer added an authentic brass-edged porthole window, which allows a view from the large farmhouse sink at one side of the kitchen.

The designer also specified surfaces and appliances that bounce and reflect the light. The backsplash glass tiles, made from recycled bottles,

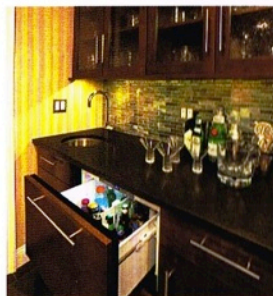
*Preceding pages and above left:* Catering to a crowd – this family-size kitchen is the center of operations for a busy household. Designed to cater to family and entertaining needs, the kitchen incorporates a social, L-shaped island with casual bar seating for seven.

*Above:* The cooking center features an oversized hood – a signature look for designer Nadia Subaran of Aidan Design. Deep drawers accommodate pots and pans.



**Above:** The cantilevered end of the island, the stepped countertops and the use of two contrasting materials help to reduce the apparent scale of the large island. The white top is White Fantasy quartzite, which resembles marble, but is more practical for the kitchen. The designer says the sculptural light fixtures balance the slightly masculine lines of the kitchen.

**Right:** Drinks are stored in a drawer refrigerator in the butler's pantry.



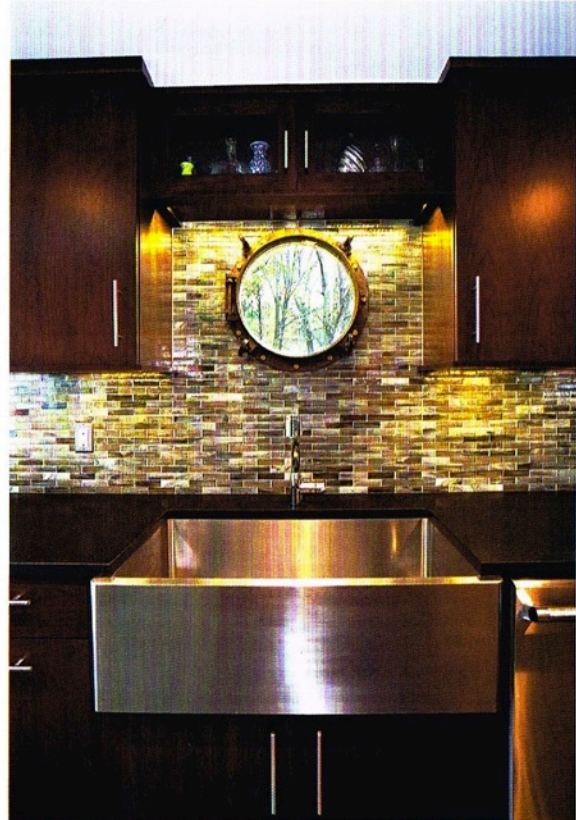
pick up the color of the brass, the quartzite countertops on the island, and the brushed stainless steel of the bar top, toekicks, window trim, hood and appliances.

Contrast is provided by flush cherry cabinets in a Dark Lager stain, and by the perimeter countertops, which are in black granite.

"With five children in this household, the owners wanted

bar seating for seven at the island," says Subaran. "But we didn't want the island to look too massive. Altering the height and material of the bar tops helps to reduce its apparent mass, as does the cantilevered section. A mix of white and black bar stools also helps to ensure the kitchen isn't overwhelmed visually."

Because the owners like to entertain often, the kitchen is



designed so the cook can work in an uninterrupted zone, while still socializing with guests. A separate drinks area with small bar and sink is positioned to one side, between the kitchen and dining room.

Much of the storage is within deep drawers. There is also a shallow bank of cabinets on the opposite wall to the cooking center, which helps to balance the space.

**Kitchen designer:** Nadia Subaran, Aidan Design (Bethesda, MD)  
**Cabinet company:** Wood-Mode  
**Cabinetry:** Cherry in Dark Lager stain; Vista veneer  
**Countertops:** New Cambrian Black; White Fantasy quartzite by R Bratti from Aidan Design  
**Backsplash:** Glass tiles from recycled bottles, from Architectural Ceramics  
**Sink:** Blanco  
**Faucets:** Rohl  
**Flooring:** Kyoto anthracite porcelain-slate tiles

**Lighting:** Infiore by Estiluz pendants  
**Oven, cooktop and ventilation:** Thermador Professional  
**Dishwasher:** Thermador Pro; Fisher & Paykel  
**Refrigerator:** Thermador  
**Drawer refrigerators:** Marvel

**Story by Colleen Hawkes**  
**Photography by Jamie Cobeldick**

See gallery of images online at  
[trendsideas.com/us2808p8](http://trendsideas.com/us2808p8)

**Above:** An authentic porthole window is positioned between overhead cabinets above a large, contemporary farmhouse sink. The color of the brass is picked out in the glass tiles of the backsplash, which were made from recycled bottles. Under-cabinet lighting also helps to focus attention on the view through the porthole.